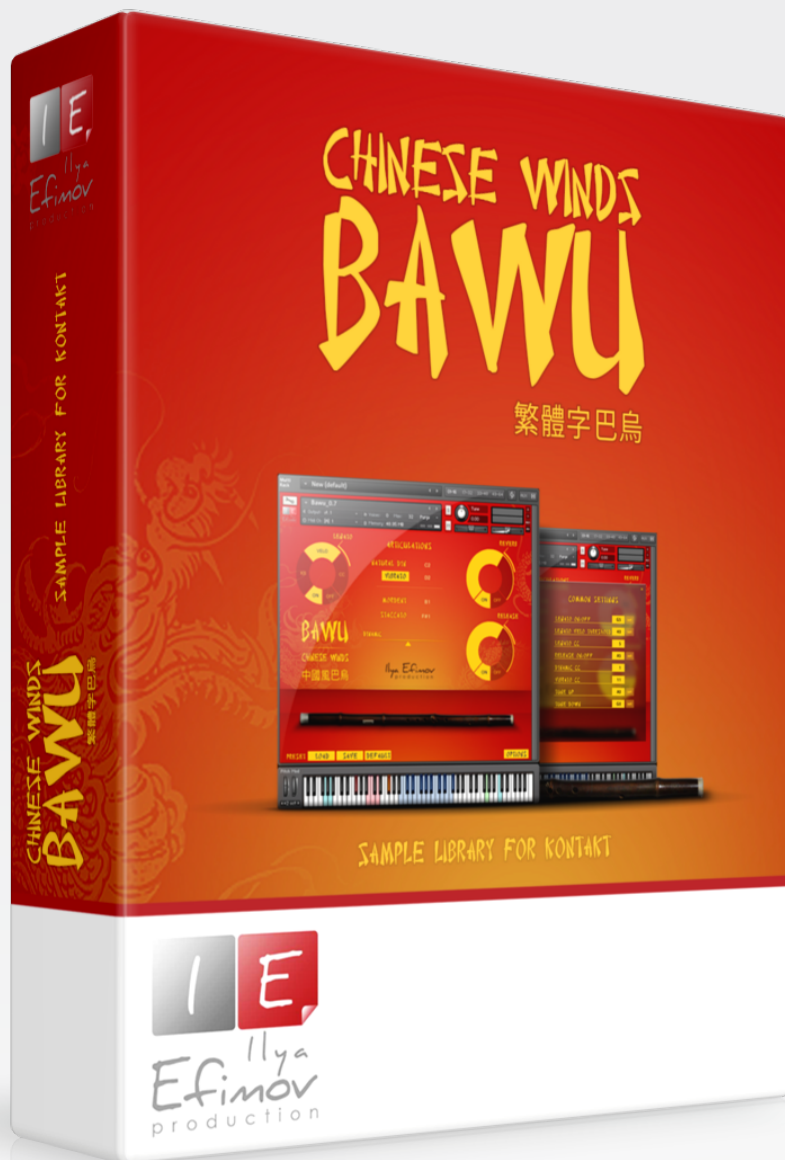




Ilya
Efimov
production



Ilya Efimov

BAWU

User`s Manual

Ilya Efimov Chinese Bawu for Kontakt !

The bawu is a Chinese wind instrument. Although shaped like a flute, it is actually a free reed instrument, with a single metal reed. It is played in a transverse (horizontal) manner. It has a pure, clarinet-like timbre and its playing technique incorporates the use of much ornamentation, particularly bending tones. The bawu likely originated in the Yunnan province of southwest China. It has become a standard instrument throughout China, used in modern Chinese compositions for traditional instrument ensembles.

Although the bawu is still predominantly performed in China, it has in recent years been adopted by European composers and performers. Rohan Leach from England, Raphael De Cock from Belgium, and Herman Witkam from the Netherlands have all taken the instrument in new directions. The musician Guo Yue, who now resides in England, has long promoted the instrument and plays it on all of his recordings.

Our bawu library will allow you to imitate virtually anything that a real bawu could play. We recorded intervals for up and down legato articulations in two variants: normal legato and glissando. We have provided the ability to vary the dynamics of the instrument to convey a wide, detailed range of expression from pp to ff. Natural vibrato may be added to the sound at any time. Staccato articulations provide added realism by means of a round-robin algorithm. Users can reassign keyswitches and midi-controllers, then save the changes to a user preset. Default settings are easily restored at any time. (See "Preset" section).

Features:

- 223 samples, 44,1 Hz \24 bit, stereo
- 2 natural legato types: normal and glissando
- 6 different articulations
- Realistic dynamic from **p** to **f**
- Control of realistic vibrato
- Reassignable keyswitches and midi-controllers
- 3 modes of legato performance
- Detune vibrato keys

You cannot use the “Libraries” tab to “Add Library” for this product. Only encoded and locked “Powered-By-Kontakt” libraries are loaded through the “Libraries” window.

In NI KONTAKT browser enter the folder in which you installed (IE_Bawu for example) and load patch Ilya Efimov Bawu.nki.

If you use a typical buffer size preloading in Kontakt, this library will use 49 MB of RAM.

1. Please go to the download links you received after purchase and download all of the files.
2. Make sure you put all downloaded files into a single folder.
3. 1. Unpack the downloaded files to any folder. Please note that the sample files you downloaded are a multi-part archive, so you do not need to extract every file; you only need to extract the first file that contains 'part1' in its name. To extract your files we recommend using Winrar for PC users, or UnrarX or Rar-Expander for the Mac. They're all free and you can find them here:

<http://www.rarlab.com/> (for PC users)
<http://www.unrarx.com/> (for MAC users)
http://download.cnet.com/unRAR/3000-2072_4-26159.html (for PC users)
<http://rar-expander.en.softonic.com/mac> (for MAC users)

- 3.2. Place 'Ilya Efimov Bawu.nki' file into the root library folder.
- 3.3. Please check the file structure.

Documentation		1 177
Samples		238 180 900
Bawu	nkc	3 350
Bawu	nkr	2 730 870
Ilya_Efimov_Bawu	nki	41 841

4. You need to have the full retail version of Kontakt 5.3 or later to use this library. **The free Kontakt Player does NOT support this library.**

5. Open the Kontakt 5 browser (look on the left-hand side of the Kontakt user interface) and click the "Files" tab. Find the library folder, which you extracted earlier, and double click on the Ilya_Efimov_Bawu.nki file which should be in that folder. You can use the Quick-Build Database option to allow Kontakt to find and store the location for faster browsing and loading.

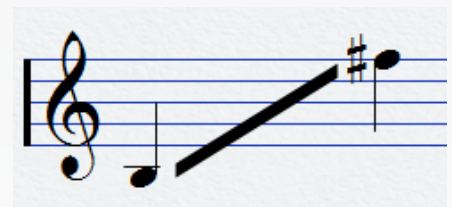
You cannot use the "Libraries" tab to "Add Library" for this product.

Range

ILYA EFIMOV BAWU



There are several variations of bawu, which differ in range and sound coloration. Our library is bawu in **D**. The instrument's range is from the **D3** to **E4**. For your convenience, we artificially expanded the range by two semitones in each direction, thus enabling a range of **B2** to **F#3**.



The Kontakt keyboard is divided as follows: Operating range is blue, switching articulations are red, the various options are colored yellow, blue and green. The GUI's main page is divided into two parts.

The center of the page contains a block of articulations. You can switch between them by clicking directly on their name or by using the midi-keyboard keyswitches. To the right of the articulation name you will see the note name to switch to the articulation. You can change the note using the arrows or to select the note by clicking on it. The interface contains Reverb, Legato and Release control.

At the bottom right of the page is a "Options" button that will open a page allowing you to adjust settings of keyswitches and re-map MIDI-controllers.

Articulations



The articulations are divided into two groups.

Group One (2): natural dynamics and vibrato are used for the first and subsequent legato notes.

Group Two (2): mordents and staccato can only be used for non-legato (non-overlapping) notes.

If the Legato mode is **off** you can use any articulation at any time.

If the Legato mode is **on** you can choose any of 4 articulations for the first non-legato note played.

Trill

To use trill articulation press and hold **F2** (Trill key) when note in main range is sounded. Trill articulation will sound until you release **F2** key.

Legato

Legato mode is enabled by default. To turn off the Legato mode use ON or OFF button at the "Legato" section or Keyswitch **G5**. This keyswitch is Velocity-dependent. If the velocity is more than 64, the Legato mode is enabled. Otherwise it is turned off. To perform legato notes, you must play overlapping notes.(i.e. the second note must be played before the first note is released).

Using legato types

There are three legato types: normal legato, slow legato and glissando. For easy switching between legato types during realtime play, there are three different options: play notes using Velocity, switching by a keyswitch and using a MIDI-controller. To select a method to switch between the legato types use the "mode selection" switcher.

1. Velo.

Switching between legato types using note velocity.

You can change the threshold of the ranges by adjusting the values of Legato Velo threshold on the "Option" page.



0-40	glissando
41-127	normal legato



2. KS.

Switching the keyswitches.

If this way is selected, velocity level will not affect the change in legato types. In this mode,

if no keyswitches are used, legato remains "normal". To change the normal legato to glissando press and hold **G2**. Slow legato will be active as long as the key is held.

3. CC.

Switching using a MIDI-controller (CC5 by default)

The desired legato type will be selected depending on the CC position

0-64	glissando
65-127	normal legato

Detune keys

The **G0** and **A0** keys may be used for a slight pitch change. The higher the Velocity, the greater the change in pitch. By quickly playing notes such as a trill, you can mimic a realistic high-speed vibrato. Holding any of the keys will gradually change their pitch. Releasing the keys will return their pitch to normal.

Release sound

The release sound will only be heard at the end of non-legato notes. You can control the volume of the release or turn off it. To turn off Release use ON or OFF button at "Release" section or Keyswitch **A5**. This keyswitch is Velocity-dependent. If the velocity is more than 64, the Legato mode is enabled.

Option page

Reassignment of the keyswitches and midi-controllers

Go to the "Options" page.

On this page you can change any keyswitch or MIDI-controller, using one of several methods:

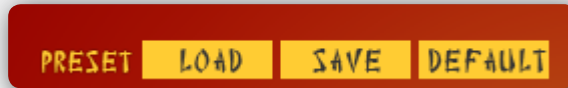
- * Use the arrows located to the right of the keyswitch cell.
- * Drag the mouse up or down while holding the left mouse button, with the cursor initially positioned over the selected cell's value.
- * Enter a value from the computer keyboard
- * Use the "Set" button in order to specify the desired keyswitch directly with a MIDI keyboard. To do this, click on the "Set" button, then press the desired key on the MIDI-keyboard. Voila! Your keyswitch is assigned.

All keyswitch changes will result in corresponding Kontakt keyboard color changes.



Presets

All changes you make on the "Option" page can be stored in a user preset by using the "SAVE" button on the main page. To load the saved user settings, use the "Load" button. To revert to the default settings, click the "Def" button. Returning the settings to their default state may also be done by using the C6 key. This is helpful in correctly opening any MIDI examples from us and other users.



C2	Natural dynamic	
D2	Vibrato	
B1	Mordent	
F#1	Staccato	
F2	Trill	
G2	slow legato (hold) "KS set" must be on	
MIDI CC5	65-127	normal legato "CC set" must be on
MIDI CC5	0-64	glissando "CC set" must be on
G5	legato on\off (velocity)	
A5	release on\off (velocity)	
MIDI CC1	natural dynamic	
MIDI CC11	natural vibrato	
A0	detune key up	
G0	detune key down	

Credits

Produced by Ilya Efimov
Creation and development by Ilya Efimov
Bawu by Alex K.
Recorded at Alexandr Rusanov Studio
GUI design by Alexey Sirotkin & Ilya Efimov
Manual written by Ilya Efimov
Script by Ilya Efimov

Special thanks to Günter Hirscher